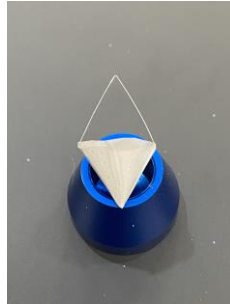


Sample Holder Brochure

Sample Holder Brochure

SB001



Standard Stainless Steel Mesh Bucket (42µm aperture mesh)

Approx.
Diameter 15mm
Height 23mm

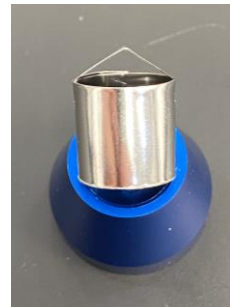
SB004



Large Stainless Steel Mesh Cylindrical Bucket (42µm aperture mesh)

Approx.
Diameter 15mm
Height 23mm

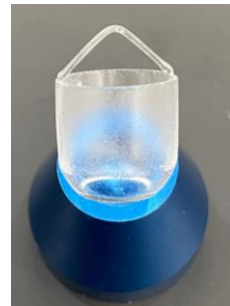
SB005



Stainless Steel Foil Cylindrical Bucket

Approx.
Diameter 11mm
Height 11mm

SB007



Quartz Sample Holder With Base Hole

Approx.
Height 12.5mm
Diameter 11mm
Weight $\leq 0.3g$

SB008



Quartz sample holder

Approx.
Diameter 12.5mm
Height 11mm
Weight $\leq 0.3g$

SB009



Large Capacity Quartz Sample Holder

Approx.
Diameter 20mm
Height 20-25mm
Weight $\leq 1.0g$

SB010



Pyrex Bulb

Approx.
Diameter 12mm
Hole Diameter 5mm
Weight: 250-300mg

SB011



Pyrex Bulb

Approx.
Diameter 12mm
Hole Diameter 5mm
Weight: 150-200mg

SB012



XEMIS Large Capacity Bucket (42 μ m aperture mesh)

Approx.
Diameter 9mm
Height 41mm
Weight $\leq 0.2g$

SB013



XEMIS Pyrex Bulb

Approx.
Diameter 10mm
Hole Diameter 4.5mm
Weight: 175mg

SB014



**XEMIS Sample Holder
Stainless Steel Mesh
(42µm aperture mesh)**

Approx.
Diameter 9mm
Height 19mm
Weight ≤0.040g

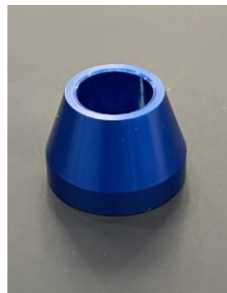
SB015



**XEMIS Sample Bucket
Loading Tool**

Approx.
Diameter 9mm
Height 12.5mm

SB016



**IGA/IGAsorp Sample Bucket
Loading Tool**

Approx.
Base diameter 21mm
Inner diameter 11mm
Height 10mm

SB017



**Membrane Sample Bucket
Base**

includes 6 x screws & 6 washers
(Screw_m1.6x5ss_ch and wavy_m1.6)

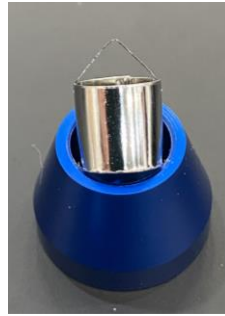
SB018



**Membrane Sample Bucket
Lid**

Used with SB017

SB019



**XEMIS Sample Holder,
Stainless Steel Foil.**

Approx.
Base diameter 9.5mm
Height 14mm

SB020



**Low-Walled Stainless Steel
Foil Sample Container**

Approx.
Base diameter 8mm
Inner diameter 7.5mm
Height 15.2mm

SB021



**8mm x 70mm Sample Holder,
IMB Method
(20µm aperture mesh)**

Approx.
Diameter 8mm
Height 70mm

SB022



**10mm x 70mm Sample Holder,
IMB Method
(20µm aperture mesh)**

Approx.
Diameter 10mm
Height 70mm

SB023



**10mm x 70mm Sample Holder,
IMB Method
(20 μ m aperture mesh)**

Approx.
Diameter 10mm
Height 70mm